

Legal Age of Marriage for Women

❖ Context

- The Union Cabinet has cleared a **proposal to raise the minimum marriage age for women from 18 to 21** to bring **uniformity** in the marriageable age of men and women.

❖ Key Highlights

- The Cabinet's decision is **based on the recommendation of a panel led by Jaya Jaitly**.
- The panel was set up by the **Ministry of Women and Child Development** to re-examine the age of marriage and its **correlation to health and social indices** such as infant mortality, maternal mortality, and nutrition levels among mothers and children.
- The legal age of marriage of women will be raised from 18 to 21 years by amending the **Prohibition of Child Marriage Act (PCMA), 2006** (which replaced the **Child Marriage Restraint Act 1929**) and **other personal laws**.

Minimum Age in Various Personal Laws

- Section 5(iii) of **The Hindu Marriage Act, 1955**, sets a minimum age of 18 for the bride and 21 for the groom.
- This is the same for **Christians** under the **Indian Christian Marriage Act, 1872** and the **Special Marriage Act**.
- For **Muslims**, the criteria is **attaining puberty**, which is assumed when the bride or groom turns 15.

About Prohibition of Child Marriage Act, 2006:

- This act makes it **illegal for girls to marry under 18 years and for boys under 21 years**
- Child marriage is a **punishable offence** with a **fine up to INR 100,000**, or **up to two years of imprisonment**, or both. It is a **non-cognizable** and **non-bailable offence**.
- The provision of the act **does not punish a child for marrying a woman nor a woman for marrying a male child**.

Other laws that may provide protection to a child bride include the Juvenile Justice (Care and Protection of Children) Act, 2000, the Domestic Violence Act, 2005, and the Protection of Children from Sexual Offences Act, 2012



NASA's IXPE Mission

❖ Context

- Recently, NASA launched a new mission named **Imaging X-ray Polarimetry Explorer** or **IXPE**.
- Onboard SpaceX's Falcon 9 rocket, it was sent to its orbit from NASA's Kennedy Space Center in Florida.
- This new mission will complement other X-ray telescopes such as the Chandra X-ray Observatory and the European Space Agency's X-ray observatory, XMM-Newton.

❖ About IXPE

- IXPE observatory is a **joint effort of NASA and the Italian Space Agency**.
- The mission **will study the most extreme and mysterious objects in the universe** – supernova remnants, supermassive black holes, and dozens of other high-energy objects.
- The mission's primary period is **two years** and the **observatory will be at 600 kms altitude**, orbiting around Earth's equator.

Face to Face Centres

➤ **IXPE** is expected to study about 40 celestial

objects in its first year in space. IXPE's polarization measurements will help scientists answer questions such as:

- How do **black holes spin**?
- Was the **black hole at the center of the Milky Way actively feeding** on surrounding material in the past?
- How do **pulsars shine so brightly in X-rays**?
- What powers the jets of energetic particles that are ejected from the region around the **supermassive black holes** at the centers of galaxies?

Features

- IXPE carries **three state-of-the-art space telescopes**.
- Each of the **three identical telescopes** hosts one **light-weight X-ray mirror** and one **detector unit**.
- These will help **observe polarized X-rays from neutron stars** and **supermassive black holes**.
- By measuring the polarization of these X-rays, **scientists can study where the light came from** and understand the geometry and inner workings of the light.



Cold Wave in Northwest India

❖ Context

- The **India Meteorological Department** has predicted a **cold wave in parts of Northwest India**
- The minimum temperature is expected to fall by 2-3 degrees centigrade in the next 2-3 days

Reasons for the Cold Wave conditions in India

- **Absence of cloud cover in the region:** No infrared heat trap resulting in low temperature of the region
- **Snowfall in Himalayas:** Cold wind emerges towards the region
- **Subsidence of cold air** over the region
- **Prevailing weak La Nina conditions in the Pacific Ocean** which favours cold wave
- **Impact of Western disturbance:** Cold wave conditions form due to lack of western disturbances. Western disturbances create precipitation and bring down day temperatures, but night temperatures remain steady.

Cold Wave

- A cold wave is declared when there is a **significant drop in minimum or night time temperature**.
- As per IMD criteria, **in the plains**, the minimum temperature should be **10 degrees or lower** and the **departure from normal minimum temperature 4.5 degrees or less for two consecutive days**.
- For **hilly regions**, a cold wave is declared when the minimum temperature is **less than or equal to 0 degree Celsius** and the minimum temperature is **4.5 degrees to 6.4 degrees below the normal**.

About India Meteorological Department

- It was **established in 1875** during the British era.
- It is an **agency of the Ministry of Earth Sciences** of the Government of India
- IMD deals with everything related to **meteorology, seismology, and associated subjects**

National Digital Drugs Databank

❖ Context

- **Competition Commission of India** in its report - **Market Study on Pharmaceutical sector in India: Key findings and observations**, has recommended to create a new databank
- Objective is to consolidate **real time data** on **active pharmaceutical manufacturing companies** in the country, therapeutic class wise/ formulation wise approved branded/unbranded products etc.

❖ Key Highlights

- **Drug and Cosmetics Rules, 1945**, implemented by the **Ministry of Health & Family Welfare**, after amendment in 2019, makes it mandatory for manufacturing licensees to register with **portal SUGAM** operated by the **Central Drugs Standard Control Organization (CDSCO)** and upload information pertaining to the licenses granted for manufacture for sale or distribution of drugs.

Face to Face Centres



National Pharmaceutical Pricing Authority

(NPPA) under the Department of Pharmaceutics, in collaboration with the National Informatics Center (NIC), has set up a **Pharma Data Bank (PDB)** through an **Integrated Pharmaceutical Database Management System (IPDMS)**. It allows pharmaceutical manufacturer/ marketing/ importer/ distributor companies to file mandatory returns prescribed under the Drugs (Prices Control) Order, 2013 (DPCO, 2013) and helps NPPA to **monitor price compliance**.

❖ CDSO

➤ The Central Drugs Standard Control Organization (CDSCO) under the **Ministry of Health & Family Welfare**, is the National Regulatory Authority (NRA) of India for drugs.

➤ Under the **Drugs and Cosmetics Act**, CDSCO is responsible for approval of Drugs, Conduct of Clinical Trials, laying down the standards for Drugs, control over the quality of imported Drugs

❖ Essential Medicines

➤ MHFW prepares a list of essential medicines in India. WHO defines such medicines as essential those that satisfy the priority health care needs of the population.

➤ These medicines are intended to be available within the health systems in adequate amounts, in appropriate dosages, with assured quality.

➤ The first such list was prepared in 1996. The latest list is **National List of Essential Medicines 2011**.

❖ NPPA

➤ **Drug prices** are **monitored** and **controlled** by the National Pharmaceutical Pricing Authority,

➤ It is an attached office under the **Ministry of Chemical & Fertilizers**.

➤ **Price controls are applicable irrespective of whether it is generic or branded**.

➤ **Drug Price Control Orders (DPCO)** are issued by the Government under section 3 of the **Essential Commodities Act, 1955**.

➤ The latest Drug Price Control Order (**DPCO-2013**) was issued by the **Ministry of Chemicals and Fertilizers** for fixing the ceiling price of medicines contained in the **National List of Essential Medicines -2011 (NLEM-2011)**

❖ CCI

➤ Competition Commission of India was established by Government in **2009** under **Competition Act 2002** to ensure freedom of trade, protect consumers interest and promote & sustain competition

➤ It work under administrative control of **Ministry of Corporate Affairs**.

Overdraft facility to SHG members

❖ Context

➤ **Ministry of Rural Development** will launch **overdraft** facility of Rs. 5000/- to verified SHG members under DAY-NRLM.

❖ Key Highlights

❖ Deendayal Antyodaya Yojana - National Rural Livelihoods Mission (DAY-NRLM)

➤ A **flagship programme** of **Ministry of Rural Development**

➤ It aims to reduce poverty by **mobilizing poor women** into **Self Help Groups (SHGs)** and strengthening their livelihood base by accessing necessary credit from banks

➤ **launched in June, 2011**, has already mobilized **8.04 crore rural women** into **73.5 Lakh Self Help Groups** and to mobilize about **10 crore women by 2024**.

➤ The Mission is using **Community Based Repayment Mechanism (CBRM)** where a committee with representatives from various SHGs or their federations take responsibility of monitoring SHG banks linkage and ensuring prompt repayment by SHG.

❖ SHG

➤ A SHG is a **community-based group** with 10-25 members.

➤ Members are usually **women from similar social and economic backgrounds**, all voluntarily coming together to save small sums of money, on a regular basis.

➤ They **pool their resources to become financially stable**, taking loans from their collective savings in times of emergency or financial scarcity, important life events or to purchase assets.

➤ **RBI regulations mandate** that banks offer financial services, including **collateral free loans** to these groups, on very low interest rates.

Face to Face Centres



News in Between the Lines

Bullock Cart Race

❖ **Context**

- The Supreme Court on Thursday gave the nod to **resume bullock cart races** in **Maharashtra that were prohibited since 2017**.
- The decision was based on the amendments to the **Prevention of Cruelty to Animals (PCA) Act, 1960** implemented by the state, in line with Karnataka and Tamil Nadu.

❖ **Key Highlights**

- The **Prevention of Cruelty to Animals Act, 1960**, is to **prevent the infliction of unnecessary pain or suffering on animals** and to amend the laws relating to the prevention of cruelty to animals.
- Bullock cart race is a **popular and traditional sport in Maharashtra and Pune** district. **The rural economy too is associated with bullock cart races.**

❖ **Other Animal Sports.**



JalliKattu	Bull-taming sport	Played in Tamil Nadu as part of the Pongal harvest festival.
Cock-fights	Fight between two roosters bred	It is common in the state of Andhra Pradesh, Jharkhand, Tamil Nadu and Kerala. not indigenous to India
Kambala	Traditional buffalo race	coastal Karnataka (Udupi and Dakshina Kannada)
Camel Race	Race of Camels	Rajasthan
Dog Fights	It is a blood sport that pits two dogs kept in cages without food for days, against one another for entertainment	Delhi
Bulbul fights	Often bulbuls are fed intoxicants to make them aggressive.	Assam

PM Awas Yojana-Urban (PMAY-U)

❖ **Context**

- **Out of 1.14 crore houses sanctioned under the Pradhan Mantri Awas Yojana-Urban (PMAY-U), a total of 52.88 lakh had been completed** or delivered to the beneficiaries so far, according to the Ministry of State for Housing and Urban Affairs.

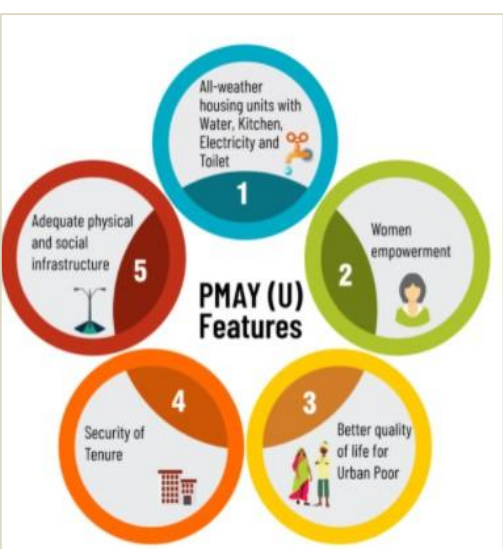
About the Scheme

- It is a flagship Mission of Government of India being implemented by the Ministry of Housing and Urban Affairs (MoHUA).
- It was launched on **25th June 2015** and **addresses urban housing shortage** among the EWS/LIG and MIG categories including the slum dwellers by ensuring a pucca house to all eligible urban households by the year 2022.
- All houses under PMAY(U) **have basic amenities like toilets, water supply, electricity and kitchen**. This scheme promotes women empowerment ownership of houses in the name of female members or in joint names.
- Preference is also given to differently abled persons, senior citizens, SCs, STs, OBCs, Minority, single women, transgender and other weaker & vulnerable sections of the society.

❖ **Components**

Slum rehabilitation of Slum Dwellers with participation of private developers using land as a resource

- Promotion of Affordable Housing for weaker section through credit linked subsidy
- Affordable Housing in Partnership with Public & Private sectors
- Subsidy for beneficiary-led individual house construction /enhancement.



Face to Face Centres



MIS Portal



❖ Context

- Union Minister for Rural Development and Panchayati Raj today launched **MIS (Management Information System)** portal for rankings of States/UTs in Land Acquisition Projects.

❖ Key Highlights

- This portal was **launched under RFCTLARR Act, 2013.** (Right to Fair Compensation and Transparency in Land Acquisition, Rehabilitation and Resettlement Act, 2013).
- **The Department of Land Resources developed this MIS portal** to capture information on various parameters of land acquisition, required for ranking of the State/UTs, which is a software-driven program to submit information by respective State/UTs on land acquisition for developmental projects.
- MIS portal is being **dubbed as a 'Vikas Portal'**.
- The portal is **developed in house by the NIC team** of the department with zero cost.
- The link to the portal is **larr.dolr.gov.in**

Kalanamak Rice



❖ Context

- Central Government information given by Rajya Sabha

❖ Key Highlights

- It is one of the finest quality scented rice grown in **Terai region of Nepal and eastern UP since Buddhist period**
- Also known as the **scented black pearl of UP.**
- It also featured in book **Speciality rices of the world**, of **FAO**
- The UP government is promoting its exporters under **One District One product** scheme.

LogiXtics



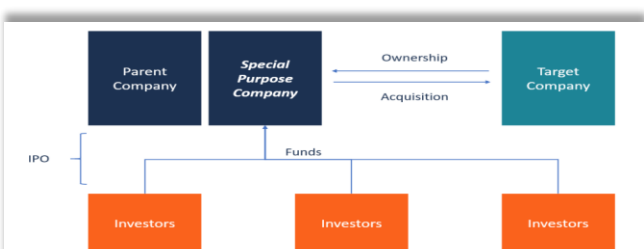
❖ Context

- DPIIT launched **Unified Logistics Interface Platform - LogiXtics** hackathon

❖ Key Highlights

- It is **organized by NITI Aayog & Atal Innovation Mission**
- To crowdsource more ideas
- ULIP is designed to enhance efficiency and reduce logistics cost in India by creating a **transparent platform** that can provide real time information to all stakeholders and **remove all asymmetry information.**
- It will help to reduce **high logistics cost of about 14%** and enhance India's competitiveness in the global trade

SPAC



❖ Context

- Byju's in talk to be listed in US via SPAC

❖ Key Highlights

- A Special purpose acquisition company is a corporation formed for the sole purpose of raising investment capital through an initial public offering (IPO)
- It has no commercial operations

Face to Face Centres

