

Competitive Roadmap for India @2047

❖ Context

- The **Economic Advisory Council to the Prime Minister (EAC-PM)** released the 'The Competitiveness Roadmap for India@100' report. It was jointly published with the **Institute for Competitiveness**.



❖ Key Highlights

- India is now a **lower-middle income country** with average prosperity levels at \$2,000 (\$7,150 at purchasing power parity).
- A **7-7.5 % real economic growth** can make India an upper-middle income country by **2047**.
- If the growth rate accelerates to **8-8.5 %**, it will make the country a **higher income nation**.
- It suggested essential areas of action, including improving labour productivity and enhancing labour mobilisation, boosting the creation of competitive job opportunities, and improving policy implementation through greater coordination.

❖ World Bank's Country Classification by Income

- The World Bank assigns the world's economies to four income groups-low, lower-middle, upper-middle & high-income countries.
- The classifications are updated each year on July 1 and are based on GNI per capita in current USD (using the Atlas method exchange rates) of the previous year (i.e. 2020 in this case).

Group	Thresholds (as of 1 July 2021)
Lower	<1046
Lower-middle income	1046-4095
Upper-middle income	4096-12695
High income	>12695

NCRB Report

❖ Context

- The National Crime Records Bureau released data for 2021.



❖ Accidental Deaths and Suicides in India Report

- The report - "Accidental Deaths and Suicides in India" - shows that **daily wage earners** remained the **largest profession-wise group** among suicide victims in 2021, accounting for 25.6 %.
- The "**unemployed persons**" group was the only one that saw a decline in suicides.
- **Maharashtra** topped in number of suicides.

❖ Crime Against Child

- **Sikkim** had the highest rate of crime against children.
- Top crimes against children in 2021 were **kidnapping and abduction** followed by **POCSO** cases.

❖ Crime Against Women

- Highest rate of crime against women was registered in **Assam** (168.3).
- **UP** is on top in terms of actual number of cases.
- **Delhi** had the highest rate among UTs (147.6).
- Majority of the crimes fall in the category of "Cruelty by husband or his relatives".
- Among 19 cities tracked having a population more than 2 MN, **Jaipur** had the highest rate.

❖ Fake Note Seizures

- Post-2016, there has been an increase in seizure of fake money. The new ₹2,000 and ₹500 currency notes were introduced in 2016.
- The highest recovery of fake ₹2,000 notes was made in **Tamil Nadu**.

Special Marriage Act (SMA), 1954

❖ Context

- The Supreme Court recently dismissed a writ petition challenging provisions of the Special Marriage Act (SMA), 1954.



❖ Key Highlights

- The writ petition has called certain provisions of the act violative of the right to privacy guaranteed under Article 21 of the Constitution as they require couples to give a notice of 30 days before the date of marriage inviting objections from the public.
- The writ seeks striking down of provisions that follow in Section 6 to Section 10.

❖ Key Issues

- These public notices have been used by anti-social elements to harass couples getting married.
- There have been instances, where marriage officers have gone over and beyond the law and sent such notices to the parents of the couple. With as many as 11 States passing anti-conversion (or so called love-jihad) laws, parents and the State are now armed to punish and harass couples.

Face to Face Centres



Workshop on (DESH) Bill, 2022



❖ Context

- A Workshop on **Development of Enterprises and Services Hub (DESH) Bill, 2022** was organized by Department of Commerce recently in New Delhi to have discussion on the DESH Bill with stakeholders from various segments.

❖ About (DESH) Bill 2022

- Unlike in the SEZ ecosystem, the government has proposed to create developmental hubs, whose focus is not limited to exports, but also to cater to the domestic markets.
- The customs duty would only be paid on the inputs used and not on the expensive final goods.
- The Bill also seeks to integrate existing industrial estates such as textiles and food parks by converting them into developmental hubs.
- The DESH Bill classifies two types of developmental hubs -- Enterprise and services hubs.
- While the **enterprise hubs** will have land-based area requirements and be allowed for both manufacturing and services activities,
- **Services hubs** will have built-up area requirements and be allowed for only services-related activities.
- These hubs, which will come up under the regional boards of states, could be created by Centre or states or jointly by both or by any goods and services provider.

- One of the key aspects of the new DESH Bill is also to promote the expansion of the gambit of service sector units.
- Currently, only specified services such as IT, ITeS are allowed in special economic zones.
- The draft bill proposes to freeze the corporation tax at concessional 15% for **greenfield and brownfield units** in the developmental hubs.
- A **greenfield project** is one which is not constrained by prior work. The construction is done on unused land where there is no need to remodel or demolish an existing structure.



- A **brownfield investment** is when a company or government entity purchases or leases existing production facilities to launch a new production activity. This is one strategy used in foreign direct investment.

Lok Ayukta



❖ Context

- The Kerala assembly recently has passed the Kerala Lok Ayukta (amendment) bill.

❖ Key Highlights

- The amendments were related to the competent authority to consider Lok Ayukta recommendations.
- If a situation arises where the Lokayukta is to pass a verdict against the chief minister in a corruption case, the Assembly would be the competent authority, not the Governor.

❖ About Lok Ayukta

- The **Lokayukta** (also **Lok Ayukta**) is the Indian Parliamentary Ombudsman, executed into power, through & for, each of the State Governments of India.
- It is brought into effect in a state, after passing the Lokayukta Act in respective state Legislature and a person of reputable background is nominated to the post.

- The post is created to quickly address grievances against the working integrity and efficiency of the government or its administration (public servants).
- Once appointed, Lokayukta cannot be dismissed or transferred by the government, and can only be removed by passing an impeachment motion by the state assembly, making it a powerful deterrent against corruption and mal-administration of the governing system.

❖ Appointment

- The Lokayukta is appointed by the Governor of the State, through nomination by its Chief Minister (in consensus with Chief justice of the State High Court, Leaders of the Opposition in the Legislative Assembly and Legislative Council, Speaker of the Legislative Assembly and Chairman of the Legislative Council).

Telangana Tops Inflation Chart

❖ Context

- Consumers in Telangana, West Bengal and Sikkim faced the steepest spike in prices, with their combined retail inflation for rural and urban areas averaging **8.32%**, **8.06%**, and **8.01%**, respectively.

❖ Key Highlights

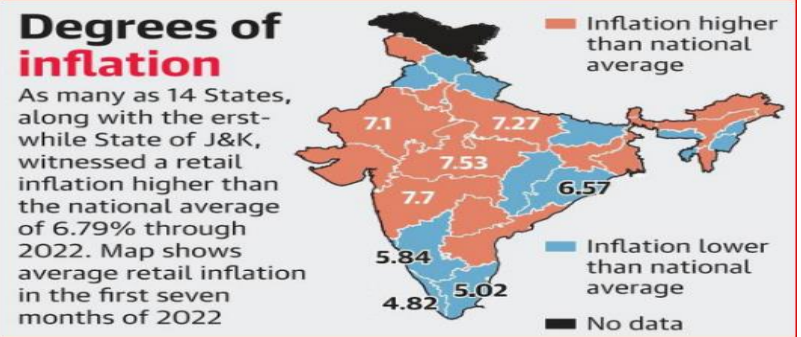
- India's retail inflation has been a bugbear for the economy since it surged past 6% in January 2022, but there are wide disparities in the pace of price rise experienced by consumers across the country, with a dozen States clocking an average inflation of less than 6% and another 12 States averaging over 7% through 2022 so far.

Face to Face Centres



- While headline inflation measured by the Consumer Price Index has averaged 6.8% in the first seven months of 2022, well above the 6% upper tolerance threshold set by policy makers.
- Retail Inflation:** An inflation rate is indicative of the rise in prices of commodities in an economy. Retail inflation, specifically, is measured in consumer price index (CPI), which is a weighted average of prices of a basket of consumer goods and services.
- Retail inflation is also termed **CPI-based inflation**.
- Headline Inflation:** Headline inflation refers to the change in value of all goods in the basket.

- Core Inflation:** Core inflation excludes food and fuel items from headline inflation.



News in Between the Lines

State Support For Fossil Fuels



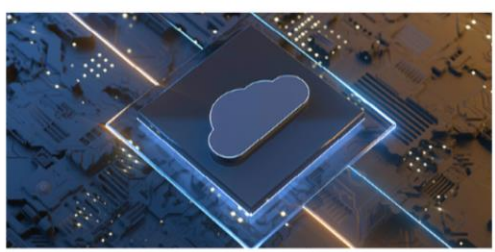
❖ Context

➤ According to an analysis released by **OECD and International Energy Agency**, governments of 51 countries worldwide offered double the overall economic support to the fossil fuel sector in 2021 compared to the previous year.

❖ Key Highlights

- Some of the 51 countries studied include - Australia, China, United Kingdom, Germany, France, Italy, Japan, Korea, Russian Federation, South Africa, United States, India, Bangladesh, Pakistan, Ukraine, Libya, Kuwait, United Arab Emirates, Qatar, Iraq, Iran, and Malaysia, among others.
- The 26th Conference of Parties to the United Nations Framework Convention on Climate Change had urged countries to limit fossil fuel subsidies.

Project Nimbus



❖ Context

➤ Google staff behind protest against the project quits.

❖ Key Highlights

- It was a **\$ 1.2 BN agreement for Google and Amazon** to supply **Israel** and its military with **AI, machine learning, and other cloud computing services**.
- The contract has drawn rebuke and condemnation from the companies' shareholders as well as their employees, over concerns that the project will lead to further abuses of Palestinians' human rights in the context of the ongoing illegal occupation and the Israeli-Palestinian conflict.

Dead Rent



❖ Context

➤ The Andhra Pradesh high court while dismissing a writ petition has ruled that a miner is liable to pay 'dead rent' even if the company is unable to extract minerals from the leased mine due to the lack of environmental clearance.

❖ What is Dead Rent?

- Dead rent is the **minimum guaranteed amount payable for a mining lease**.

Solomon Islands



❖ Context

➤ Solomon Islands has suspended visits from all foreign navies, citing a need to review approval processes.

❖ About Solomon Island

- Solomon Islands is an archipelagic state situated in the south-west Pacific Ocean, approximately 2,000 kms to the northeast of Australia.
- Its land mass of 28,400 km² extends over nearly 1000 islands comprising nine main island groups.
- The capital, Honiara, is located on **Guadalcanal**, the largest island.
- There are 63 distinct languages in the country, with numerous local dialects. English is the official language but Solomons' Pijin is the lingua franca for the majority of people.
- The highest peak in the country is **Mount Popomanaseu**.

Face to Face Centres

PARAKH



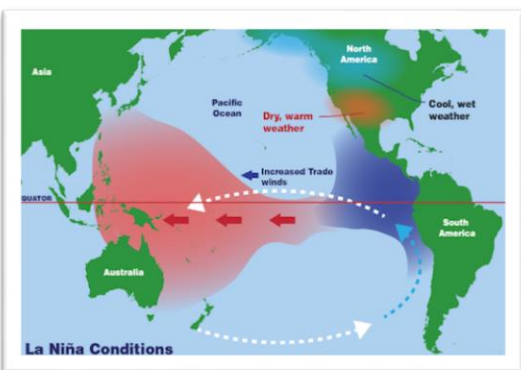
❖ Context

➤ The government has proposed a new regulator for uniformity in all board exams.

❖ Key Highlights

- The proposed regulator, PARAKH (**Performance Assessment, Review and Analysis of Knowledge for Holistic Development**) will act as a constituent unit of the NCERT.
- A benchmark framework is at the drawing stage which will assess students at the secondary and higher secondary level. State and central boards currently following different standards of evaluation, lead to wide disparities in scores.
- PARAKH will also be tasked with holding **periodic learning outcome tests** like the National Achievement Survey (NAS) and State Achievement Surveys.

La Nina



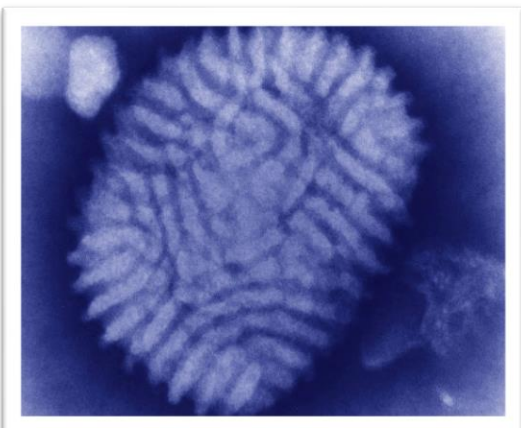
❖ Context

➤ La Niña conditions prevailing over the **equatorial Pacific Ocean** since **September 2020** have **entered the third year**.

❖ Key Highlights

- The phenomenon is being termed as uncommon as there are **only six instances** of La Niña lasting for more than two years **since the 1950s**.
- La Niña is when the **sea surface temperatures (SSTs)** along the central and equatorial Pacific Ocean are **colder than normal**.
- Such conditions, though favouring the Indian monsoon, also cause **frequent and intense hurricanes and cyclones** in the Atlantic Ocean and the Bay of Bengal.
- This year, India has received 740.3mm rainfall which was quantitatively 7% above the seasonal average till August 30. Out of the 36 states/Union Territories, 30 have received rainfall categorised as 'normal' or 'excess' or 'large excess'.
- When the realised rainfall is $\geq 60\%$, 20% to 59%, -19% to +19%, -59% to -20%, -99% to -60% of long period average (LPA), the rainfall is categorised as large excess, excess, normal, deficient, large deficient respectively.

Myxoma Virus



❖ Context

➤ A latest study has found that the virus can be used to boost the human body's immune capacity against cancer cells.

❖ Key Highlights

- Viruses that selectively kill and target cancer cells while sparing normal ones are known as **Oncolytic virus**. When T cells were infected with myxoma virus, it was found that the synergy between them bolstered solid tumour cell autosis that reinforces tumour clearance.
- **Autosis** is a form of cell destruction that is useful against solid tumours, which are seen as treatment resistant.
- Though Myxoma can target and kill cancer cells directly, using myxoma equipped T cells worked better. This is because cancerous cells in the vicinity of those targeted cells were also destroyed. This process is called **bystander killing**.

Stockholm Junior Water Prize



[Daily Current Affairs](#)

[Daily Pre PARE](#) [Daily MCQ Quiz](#)

❖ Context

➤ A Canadian student wins 2022 Stockholm Junior Water Prize **during a ceremony at World Water Week in Stockholm**.

❖ Key Highlights

- **World Water Week** is a conference on global water issues.
- Stockholm Junior Water is an international competition where students aged 15 to 20 years present solutions to major water challenges.
- The prize was given to the student for her research on how to treat and prevent **harmful algae blooms**.
- The student employed the concept of biomanipulation and learned which species of zooplankton was best to treat and prevent algae blooms.
- **Biomanipulation** is the deliberate alteration of an ecosystem by adding or removing species, especially predators.

Face to Face Centres